

The Nordic House - Accessibility guide

Arriving at the Nordic House - parking



View of the accessible parking space.

When you arrive at the Nordic House there is a big free parking lot outside where you can park your car or bike.



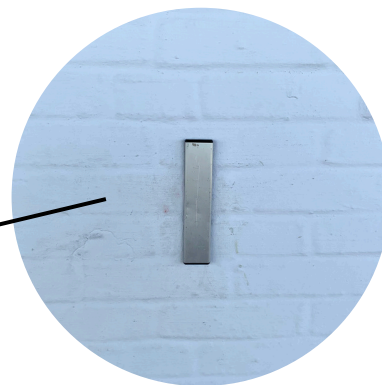
There is only one accessible parking spot at the moment but you are welcome to park as close as possible to the house for your own convenience.

Waking to the main door



Ramp for
wheelchair or
walker access.

Now, you can walk up to the main entrance using the stairs or the ramp.
The main door is facing the pond you can't miss it.



Now you can press the grey buton on the
wall to open the door.

Entering the House - Atrium

When you enter the house, you will first arrive in a small lobby. You can walk pass the second door and arrive in the main hallway that we refer to as "Atrium".

Cloakroom and bathrooms



Toilet 3



Main door



Cloakroom

Here you can leave your bags and coat at your own responsibility.



On you left at the end of the hallway you will find the library.



The library desk is also located there, it is the meeting point of the house. There will always be someone there to answer your questions and help you if you need further assistance.





The library is divided into 3 levels, the first one for novels, biographies, magazines, knitting books, cooking books, lifestyle and DVD.

The second floor "the mezzanine" is only accessible by stairs but you can ask the library staff if you need help to get a book. This floor is for poetry books, travel books, history, art and design.

The last floor is the children's library. It's accessible with the stairs but we also have an elevator close to the main entrance that can take you down to this part of the building. Please ask further assistance to the library desk. We will happily help you to get there.

Please refer to the "Exhibition space" (page 10) to see how to access downstairs with the elevator. Thank you

There is a low threshold (about 2cm) on the floor to enter the library that makes wheelchair access challenging. The library desk staff can provide further assistance and help you in.





This are the stairs to access downstairs to the mezzanine (9 steps) and then to the children's library (9 steps extra).

Elissa Auditorium

If you are in the house for an event happening in the Elissa Auditorium then you are looking for this big double door.



There is also a low threshold to enter the auditorium.

You can always request help from our staff when needed too.

If you are assisting at a screening or a seated event, please let us know how we can accommodate you at best.

The house staff will use discretion and do their best to make you feel include in this event.



Restaurant - coffee house



If you are looking for a place to eat or have a drink Plantan Bistró is the house café. This is the entrance to the restaurant. You can order at the counter lunch, cake and drink. Their menu is available in Icelandic and English at the counter but also on their website at: <https://www.plantankaffihus.is/plantan-bistro>

You can enjoy your food inside the restaurant, at the tables located in the Atrium or outside in the greenhouse or at the garden's tables.



Overwhelmed/ noise sensitivity



When there are a lot of people visiting the house, loud families or event happening it can get a bit loud. If you feel overwhelmed, please let the library desk staff know.

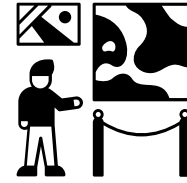
We can guide you to our lounge area where you can rest and isolate yourself for a few minutes.

This area is also comfortable for breastfeeding mothers.



Exhibition space - Hvelfing

Access from inside the house:



Access to the exhibition space also refer to as "Hvelfing". You can access this area two ways. When you enter through the main entrance, you will find a "golden elevator" on your left, you can use it and press "K" to access the exhibition area.



Press "K" to access downstairs



Access to the ramp to the children's library

This is also the access to the children's library with a ramp. Please let the library desk know that you are gonna use the elevator so we can open the door for you and the exhibition staff can install the ramp.

In the exhibition space:
You will find a staff welcoming you at our exhibition desk.
The show is always free of charge.
We offer brochures in different languages about the exhibition and our museum guide will happily answer your questions and show you around.





Entrance to the exhibition space. The exhibition space is easily accessible, there are no threshold on the way. We host about three different exhibitions a year and informations about noise sensitivity, photophobia or epilepsy can be found on our wesbite under each exhibition description in the "accessibility" part.



Toilet in the exhibition space:
There is one restroom available in the space. You can access it by passing the desk the oposite way of the elevator. There is also a cloakroom where you can leave your bag and belongings if you would like.

Exit the exhibition/ access by the stairs



To exit the exhibition you can use the outdoor stairs, you will arrive to the parking lot.

You can also use the elevator and press "1" it will take you right back to the first floor



If you prefer to access the exhibition using the stairs: from the parking lot of the house you will see stairs going down to the basement, this is the exhibition official entrance.

There is 9 steps to go down and a small step to enter the building.

Be aware that in winter the stairs can get slippery even if we are trying our best to keep the way clear.

About the house and contact information's

The Nordic House was designed by Alvar Aalto in 1968 and this house is an heritage listed building .

For this reason we are not allowed to fix or upgrade some elements of the house that would facilitate the access like the threshold removing.

We are working closely with architects on making possible the access to everyone while tackling architecture regulations and restrictions.

We have a team in the house dedicated to accessibility and we will hapilly help you during your visit to the Nordic House.

If you feel like you would like to plan your visit ahead or have any questions or request please send an email to : feedback@nordichouse.is

Thank you for your understanding,

The Nordic House

